

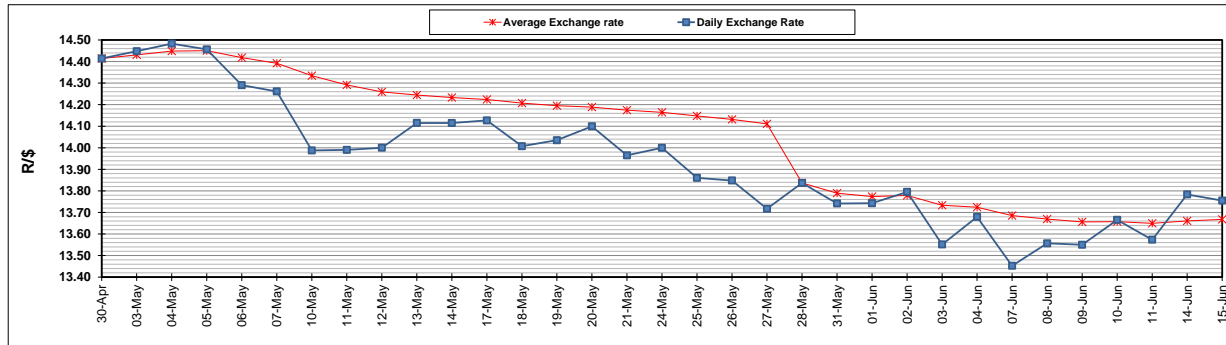
	PETROL 95 ULP	PETROL 93 ULP & LRP	DIESEL 0.05%	DIESEL 0.005%	ILL. PAR.
GAUTENG PUMP PRICE (SA c/l) AS FROM 02/06/2021	1,713.000	1,691.000	-	-	-
WHOLESALE PRICE (SA c/l) AS FROM 02/06/2021	-	-	1,466.620	1,471.020	877.488
SINGLE NATIONAL MAXIMUM RETAIL PRICE	-	-	-	-	1,102.000
BASIC FUEL PRICE - 15/06/2021 (SA c/l)	731.421	723.504	717.383	720.447	694.913
PRESS RELEASE CONTRIBUTION TO BFP 02/06/2021 - 15/06/2021 (SA c/l)	717.170	705.170	679.630	684.030	664.128
UNIT OVER/(UNDER) RECOVERY - 15/06/2021 (SA c/l)	(14.251)	(18.334)	(37.753)	(36.417)	(30.785)
AVERAGE BASIC FUEL PRICE 28/05/2021 - 15/06/2021	714.611	706.351	695.666	699.218	674.573
AVERAGE UNIT OVER/(UNDER) RECOVERY 28/05/2021 - 15/06/2021	4.867	1.127	(20.651)	(20.034)	(15.061)

ANALYSIS MOVEMENT OF AVERAGE OVER/(UNDER) RECOVERY

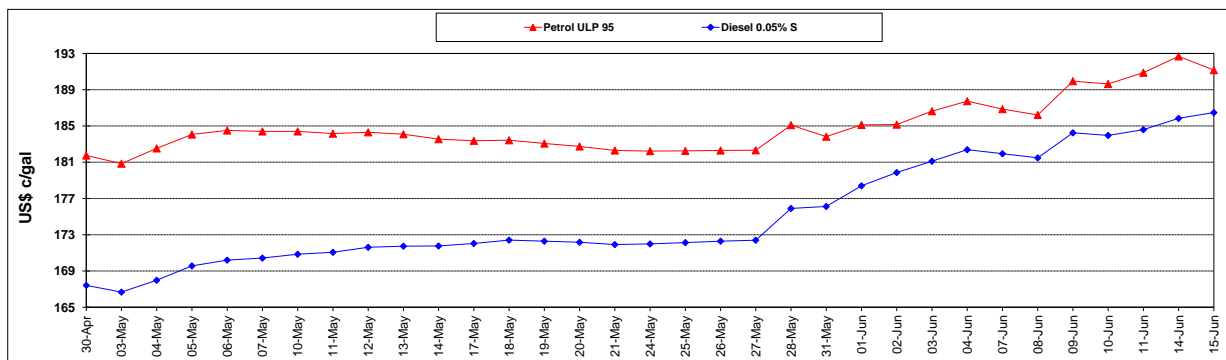
	PETROL 95	PETROL 93	DIESEL 0.05%	DIESEL 0.005%	ILL. PAR.
- MOVEMENT IN INTERNATIONAL PRODUCT PRICES	(18.300)	(21.772)	(43.204)	(42.702)	(36.929)
- MOVEMENT IN EXCHANGE RATE	23.167	22.899	22.553	22.668	21.869
AVERAGE UNIT OVER/(UNDER) RECOVERY 28/05/2021 - 15/06/2021	4.867	1.127	(20.651)	(20.034)	(15.061)

R/\$ EXCHANGE RATE - (R/\$13.7550- 15/06/2021)

EXCHANGE RATE USED IN BASIC FUEL PRICE



INTERNATIONAL PRODUCT PRICES OF BASKET USED IN BASIC FUEL PRICE



BASIC FUEL PRICE IN SA CENTS PER LITRE

